

SEMI Food, Industrial Packaging



**Beautify the world
Beautify the environment
Beautify the product**



SEMI
Food, Industrial
Packaging

CEO message



Since started product packing materials in 1980, the SEMI Industries Co., Ltd has been committed to preserve and create of product's value for the purpose of packaging, with the priority given to satisfying customers' desires through steady accumulation of technologies and experiences,

SEMI Industries Co., Ltd produces a variety of food packaging materials, such as seasoning sauces(general seasonings) packaging materials, vacuum packaging materials, frozen/refrigerated food packaging materials, instant food packaging materials, and LLDPE films for packaging and shopping bags. In addition,

it has been playing a leading role in addressing the problem of landfill waste by positively utilizing environmentally friendly materials of PE bags for environmental protection.

SEMI Industries Co., Ltd is not satisfied now, but customer's satisfaction is our best management philosophy. We promise to do our best to become a more trusted company by coping with specialization of packaging and small quantity of food by 21st century through continuous research and development.

History

1973

Established "National Industries"

1995

Changed the company name to "SEMI Industries Co., Ltd"

2002

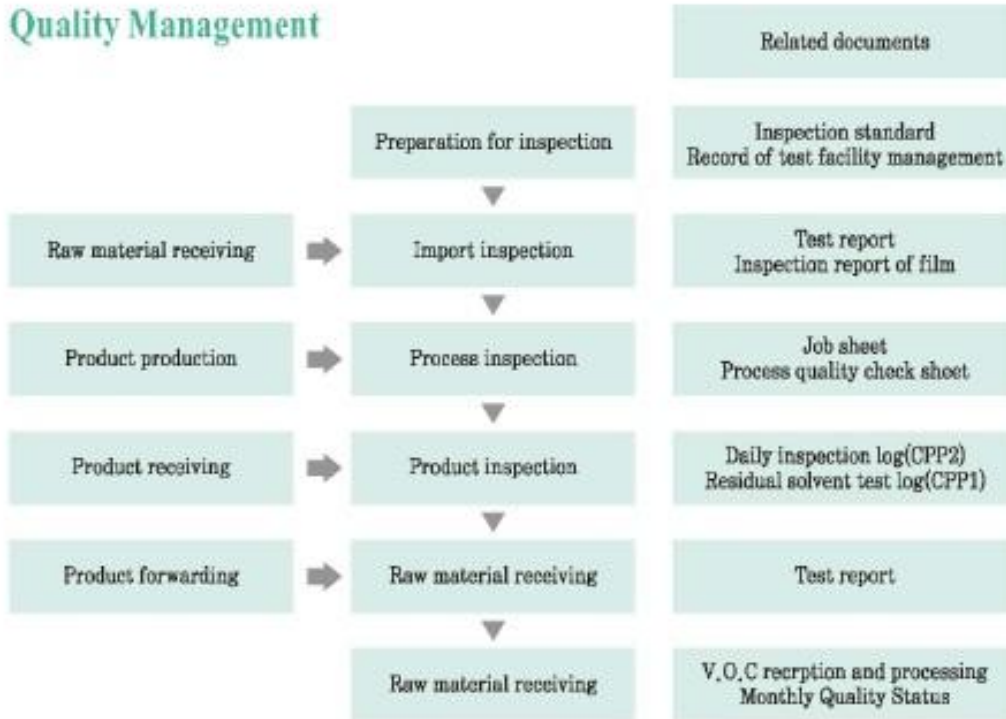
Moved company to 1094, Poseungjangan-ro, Jangan-myeon, Hwaseong-si, Gyeonggi-do, Republic of Korea

2014

Certification of ISO 22000(Quality management system)
Acquisition certification of CCM(Customer Centered Management)
- The first acquired company in all B2B companies



Quality Management



CCM(Customer Centered Management)



What is CCM (Customer Centered Management)?

It is a system that evaluates and certifies that all activities performed by the company are composed of consumers from the consumer point of view and that they continually improve related management activities.



Voice of Customer (VOC)



Increase customer efficiency
Protecting consumer rights

<p>QMS-0023 Quality Management System - Korea Society For Quality(KSQ)</p>	<p>FSMS-0004 Food Safety Management System - Korea Society For Quality(KSQ)</p>	<p>EMS-0041 Environmental Management System - Korea Society For Quality(KSQ)</p>	<p>Certificate ECCM Certificate of Excellent Consumer Management - Korea Fair Trade Commission(KFTC)</p>
---	--	---	---

Product Types

Products of SEMI Industries always can be found around us

3 side seal pouch



3-Side Seal Pouch packaging are used for a variety of application including frozen food, meats and other food products, 3-side seal pouch packaging can be printed as an option or can be plain. It can come in a variety of materials including a medium or high barrier for a longer shelf life.

Stand-up pouch



Stand-up pouch is used for virtually any product in terms of size, performance and graphic reproduction needs. Stand-up pouch can be designed with a wide variety of shapes, fitments, and re-closable features.

Quad seal gusset pouch



Quad-seal gusseted pouch is commonly known as the traditional 'Coffee Pouch Style' but can be customized for almost any food application. Multi-layer laminations including aluminum foil, metalized raw materials and easy peel sealants are available with quad-seal gusseted pouches.

Box pouch



Box pouch's bottom side designed as square shape. Box pouch can be used 5 sides (flat, back, 2 side, bottom) to print on surfaces, so it is an effective product to display. Especially, it is used for coffee, pet food, or powder type products. In the case of heavy materials, it maintains without loss of shape and makes the luxury product.



Product Types

SEMI Industries has pursued customers' satisfaction through its accumulated techniques and experiences and the strict quality management. SEMI will satisfy customers through continuous researches and creative product development by following the periodical changes with diverse products to improve the competitiveness and products.

Spout pouch



Spout pouch is designed as a flexible replacement to rigid plastic containers. It is the environment's answer to replacing glass or molded containers as they have up to a 75% reduced carbon footprint as compared to traditional containers. Spouts attached to shaped pouches are a popular application with additional options like die-cut handles which are available for enhanced consumer use.

Stick pack



Single-serve stick pack is designed to give consumers the availability of pre-measured ingredients for products such as flavoring for drinks on the go, instant coffee and cream/whitener alternatives. Stick packs are produced using multi-layer laminations designed specifically for vertical form/fill/seal equipment. Stick pack can also be designed with Easy Tear capabilities built into the film structures.

Lidding film



High performance lidding roll-stock solutions including weld and peelable seals are available for most horizontal applications including die-cut formats too. Roll-stock can be made using Aluminum Foil, metallized films including a variety of paper substrates. Lidding films are used extensively in the dairy industry, as well as the prepared foods and produce industry.

Custom roll stock



Laminated multi-layer roll-stock designed for both vertical and horizontal form/fill/seal applications. Fin and lap seal compliant structures are available along with specialty sealants such as cast polypropylene and easy peel. For products that need to be packed in a low or no heat application, our roll-stock can be provided with a patterned cold seal applied to the inside layer of the roll-stock.

Facilities

Desire for the best quality – Manufacturing line with the latest technologies



Gravure Printing Machine

Gravure printing is a method that fills ink into concave surface to transfer it on the film. It has high speed and great color reproducibility. In addition, it is possible to print up to 10 color according to latest automatic focus control system,



Dry Laminator

Organic solvent type adhesive is applied to base material, dried by hot air, and base material and base material are adhered to each other.



Extrusion Laminator

Pallet type resin is thermally melted to bond film and film in film state, and it is coated on film to give thermal adhesion layer.

SEMI Industries have dominated the industry with its excellent techniques and technologies. It pursues a perfect flexible packaging culture equipped with film extrusion machines, gravure printing machines and various extrusion laminators for realizing a beautiful packaging culture as well as improving the quality of products.



Aging room

It is laminated using reactive adhesive and then reacted with adhesive at constant temperature and time to firmly adhere substrate and substrate to postpone the shelf life of the contents.



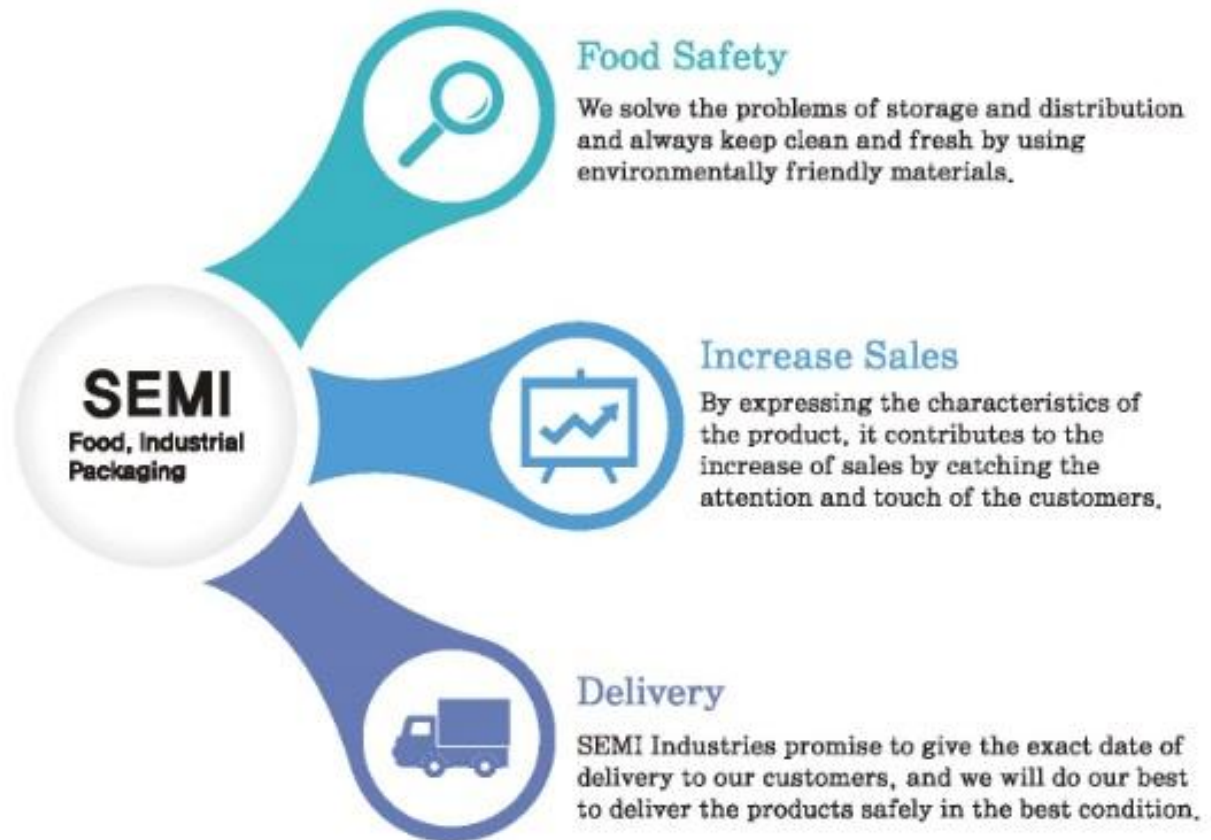
Slitter

Printed and laminated products are precisely cut to the standard required by the customer without any margin of error, raising the merchantability as a final product.



Packing Material Processing Machine

The form of flexible packaging is not usually fixed, but it is a form that takes into account the means of transport and the beauty of the contents, as the shape changes randomly depending on the contents.





SEMI Industries Co., Ltd

Office: 1094, Poseungjangan-ro, Jangan-myeon,
Hwaseong-si, Gyeonggi-do, Republic of Korea
TEL: +82-31-359-9811~2 FAX: +82-31-351-9803
WEBSITE: <http://en.semiin.com>